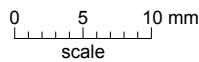
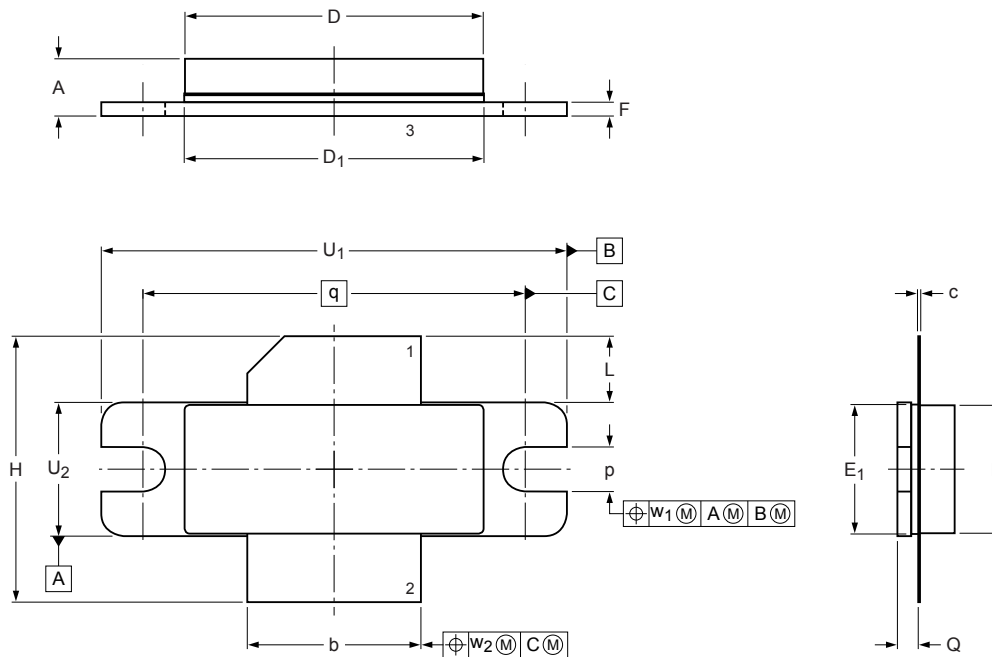


Flanged ceramic package; 2 mounting holes; 2 leads

SOT957A



DIMENSIONS (mm are the original dimensions)

UNIT	A	b	c	D	D ₁	E	E ₁	F	H	L	P	Q	q	U ₁	U ₂	w ₁	w ₂
mm	4.67 4.08	12.83 12.57	0.15 0.10	22.07 21.62	22.04 21.64	9.53 9.27	9.55 9.25	1.14 0.89	19.94 18.92	5.33 4.31	3.38 3.12	1.70 1.45	27.94	34.16 33.91	9.91 9.65	0.25	0.25
inches	0.184 0.1605	0.505 0.495	0.006 0.004	0.869 0.851	0.868 0.852	0.375 0.365	0.376 0.364	0.045 0.035	0.785 0.745	0.210 0.170	0.133 0.123	0.067 0.057	1.100	1.345 1.335	0.390 0.380	0.01	0.01

OUTLINE VERSION	REFERENCES				EUROPEAN PROJECTION	ISSUE DATE
	IEC	JEDEC	JEITA			
SOT957A						07-03-01 12-05-02