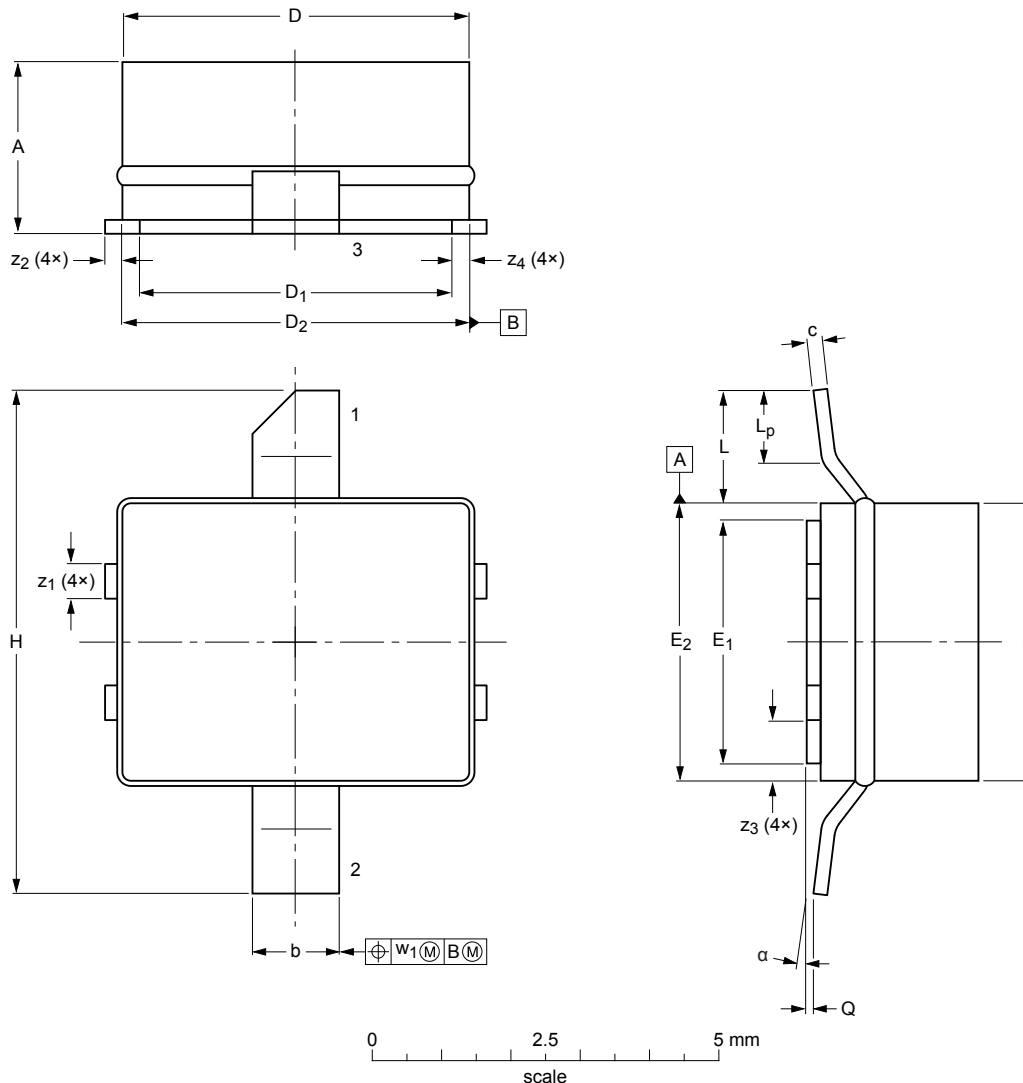


Ceramic surface-mounted package; 2 leads

SOT538A



Dimensions (mm are the original dimensions)

Unit	A	b	c	D	D <sub>1</sub>	D <sub>2</sub>	E	E <sub>1</sub>	E <sub>2</sub>	H	L	L <sub>p</sub>	Q	w <sub>1</sub>	z <sub>1</sub>	z <sub>2</sub>	z <sub>3</sub>	z <sub>4</sub>	$\theta$
max	2.34	1.35	0.23	5.16	4.65	5.16	4.14	3.63	4.14	7.49	2.03	1.02	0.1		0.58	0.25	0.97	0.51	7°
nom														0.25					
min	2.13	1.19	0.18	5.00	4.50	5.00	3.99	3.48	3.99	7.24	1.27	0.51	0.0		0.43	0.18	0.81	0.00	0°

sot538a\_po

Outline version	References			European projection	Issue date
	IEC	JEDEC	JEITA		
SOT538A					13-02-07 15-04-05