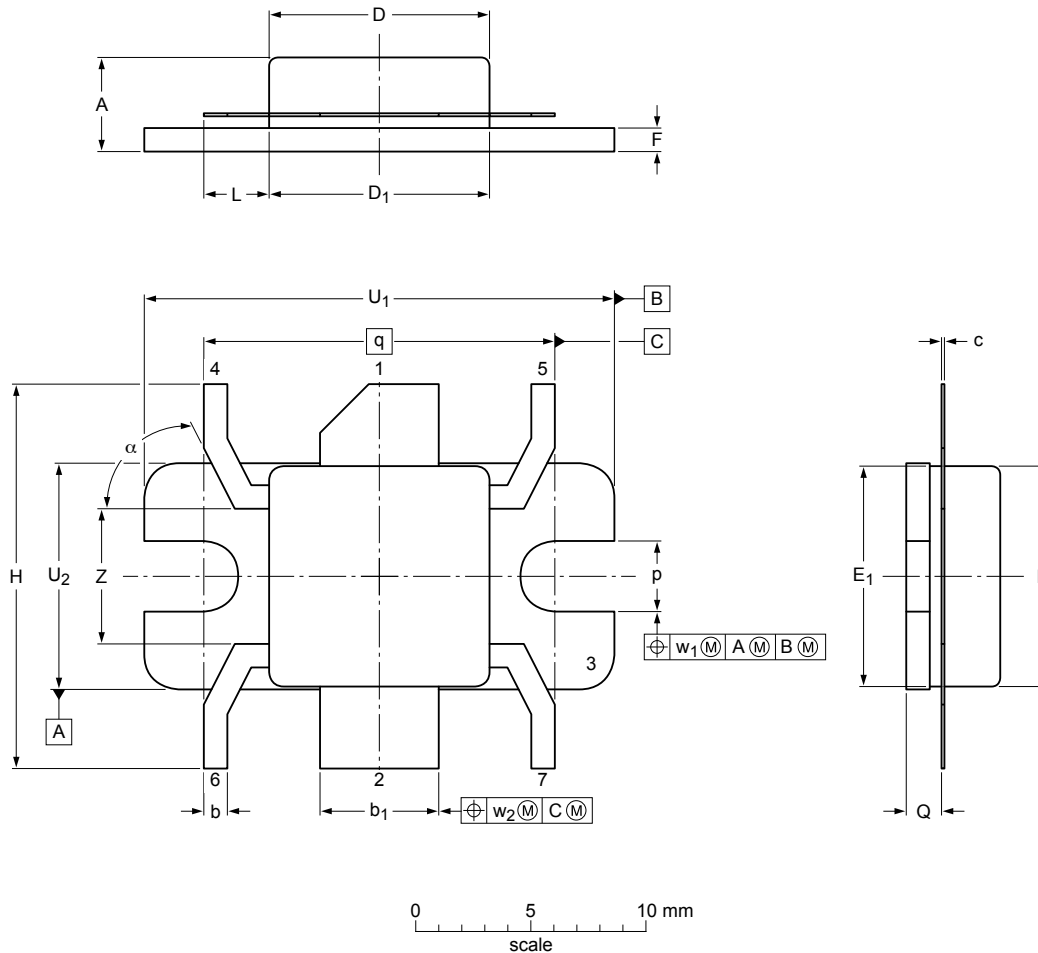


Flanged ceramic package; 2 mounting holes; 6 leads

SOT1112A



Dimensions

Unit ⁽¹⁾	A	b	b ₁	c	D	D ₁	E	E ₁	F	H	L	p	Q ⁽²⁾	q	U ₁	U ₂	w ₁	w ₂	Z	α
mm	max	4.65	1.14	5.26	0.18	9.65	9.65	9.65	1.14	17.12	3.00	3.30	1.70	15.24	20.45	9.91	0.25	0.51	5.97	64°
	nom	3.76	0.89	5.00	0.10	9.40	9.40	9.40	0.89	16.10	2.69	2.92	1.45							
inches	max	0.183	0.045	0.207	0.007	0.38	0.38	0.38	0.045	0.674	0.118	0.130	0.067	0.6	0.805	0.39	0.01	0.02	0.235	64°
	nom	0.148	0.035	0.197	0.004	0.37	0.37	0.37	0.035	0.634	0.106	0.115	0.057							

Note

1. millimeter dimensions are derived from the original inch dimensions.
2. dimension is measured 0.030 inch (0.76 mm) from the body.

sot1112a_po

Outline version	References			European projection	Issue date
	IEC	JEDEC	JEITA		
SOT1112A					09-10-12 10-02-02