

NA-1766

CLF1G0035-100 at 3100-3500 MHz

Rev. 3 — 05 October 2015

AMPLEON

Application Measurement
Report

Document information

Info	Content
Keywords	NA-1766
Abstract	Measurement results of a demo board for 3100-3500MHz with 1x CLF1G0035-100.

Revision history

Rev	Date	Description
1	20130208	
2	20150424	Update for web publication
3	20151005	The format of this document has been redesigned to comply with the new identity guidelines of Ampleon. Legal texts have been adapted to the new company name where appropriate.

1. Introduction

1.1 General Description

This document shows the measurement results of a 3100-3500MHz demo amplifier (Board NA-1766) with 1x CLF1G0035-100.

1.2 Test object details

Transistor type: CLF1G0035-100 (bolted down)
Production code: 2128-m1249 1X
Package: SOT467C
Board: CLF1G0035-100 Rev4A -Output
CLF1G0035-100 Rev3 -Input
Demo number: NA-1766

1.3 Used Test signals

CW-pulsed: Power Sweeps at 3.1-3.5GHz and Frequency Sweep at 100W (50dBm)

1.4 Test circuit

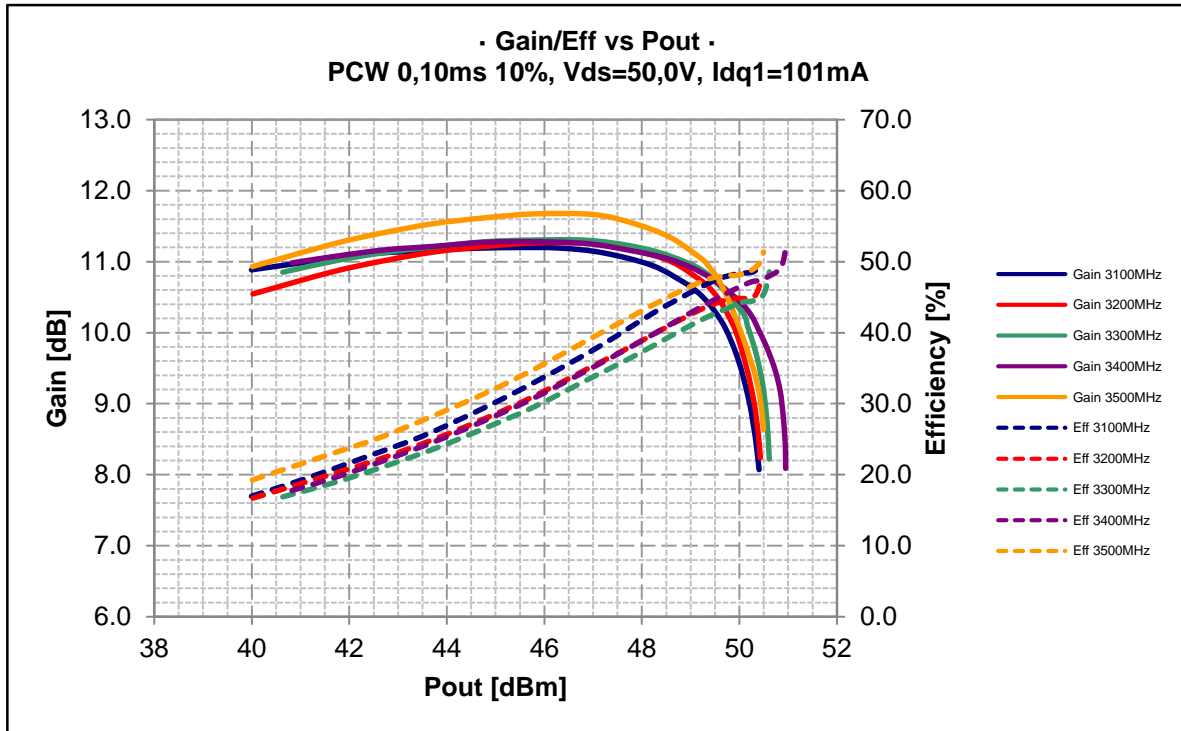
A description of this circuit can be found in **chapter 3**. The test circuit has been designed on Rogers RO3006, h=25mil, er=6.16, 2x35um copper. Supply voltage (drain-source) is 50V. The Idq is standard set to 100mA at the bias module. You can measure Id on the pins at shunt R3 (0.01Ohm).

Please note that the Bias module draws current. Approximately 20-30 mA.

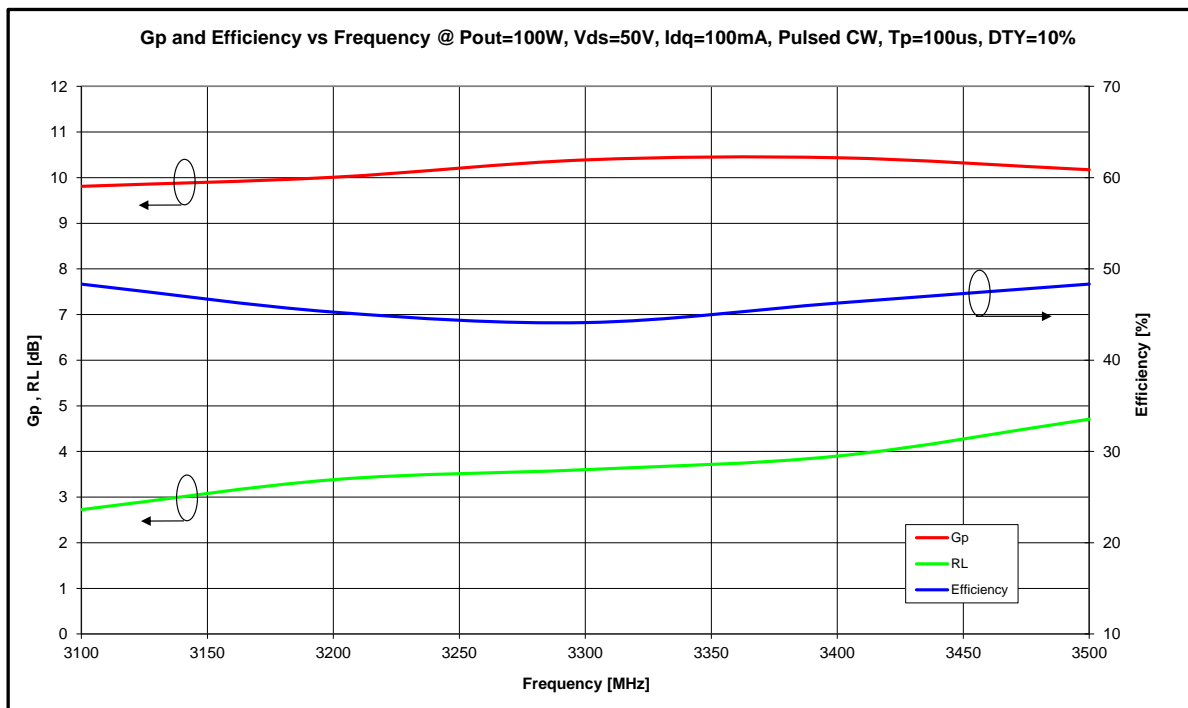
A description can be found in application note **AN11130**.

2. Measurement Results

2.1 CW-pulsed – Power Sweep

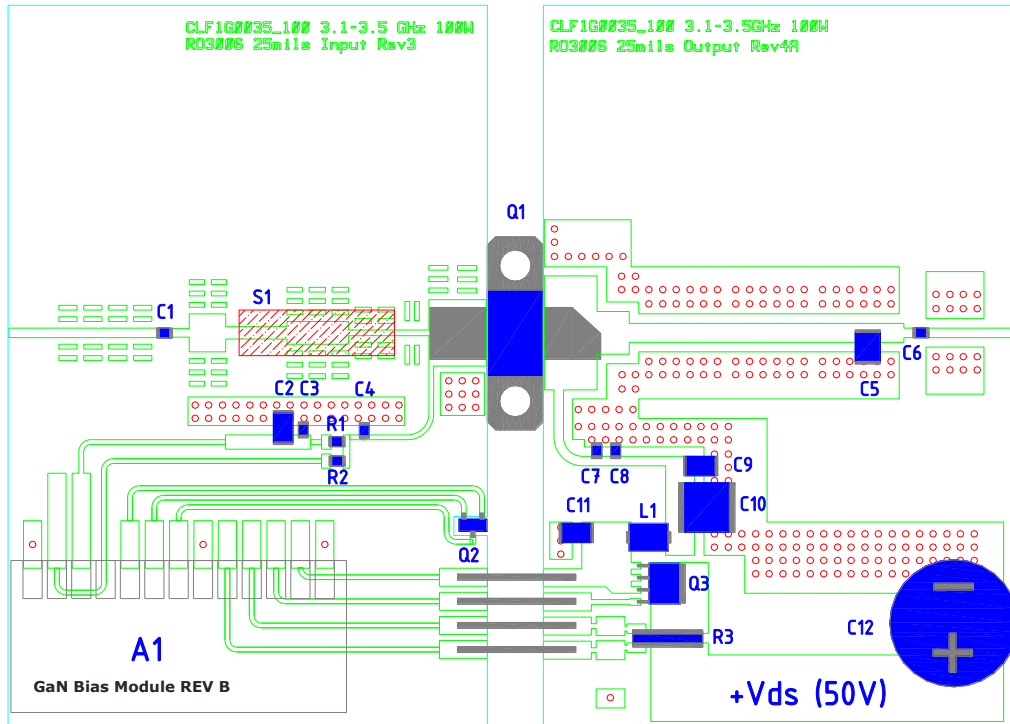


2.2 Frequency sweep at Pout=100W (50dBm)



3. PCB Layout

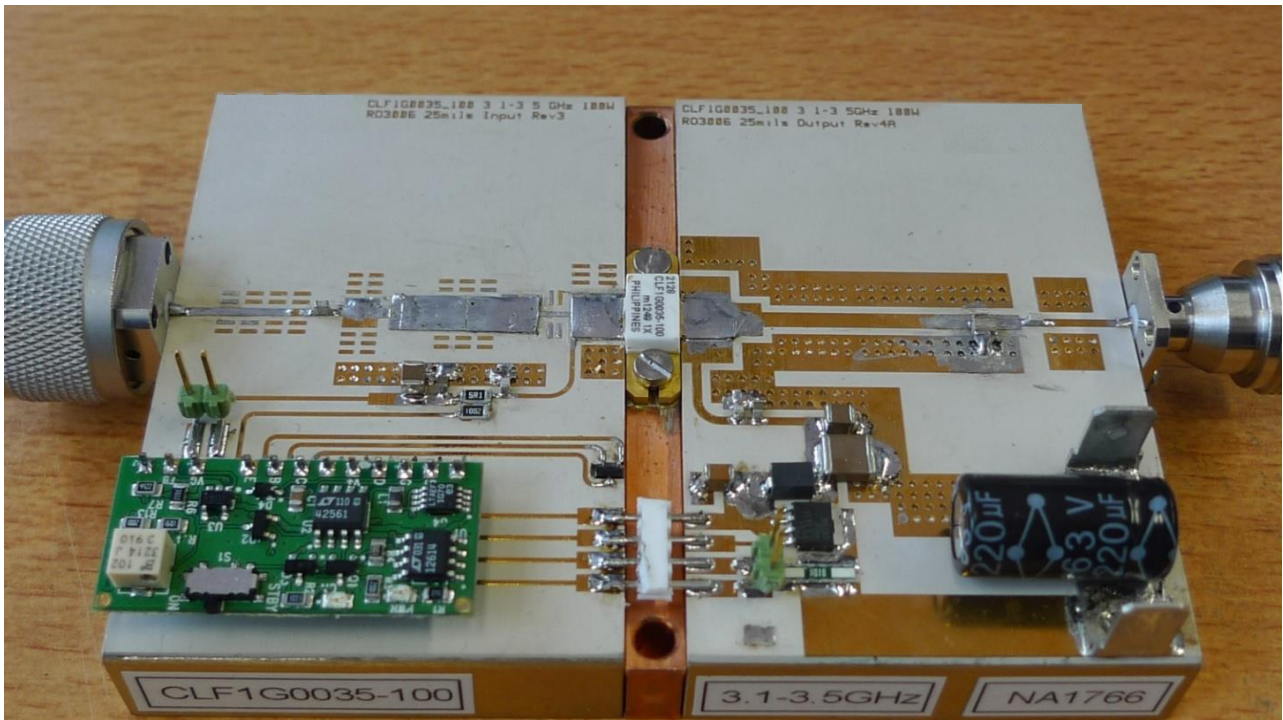
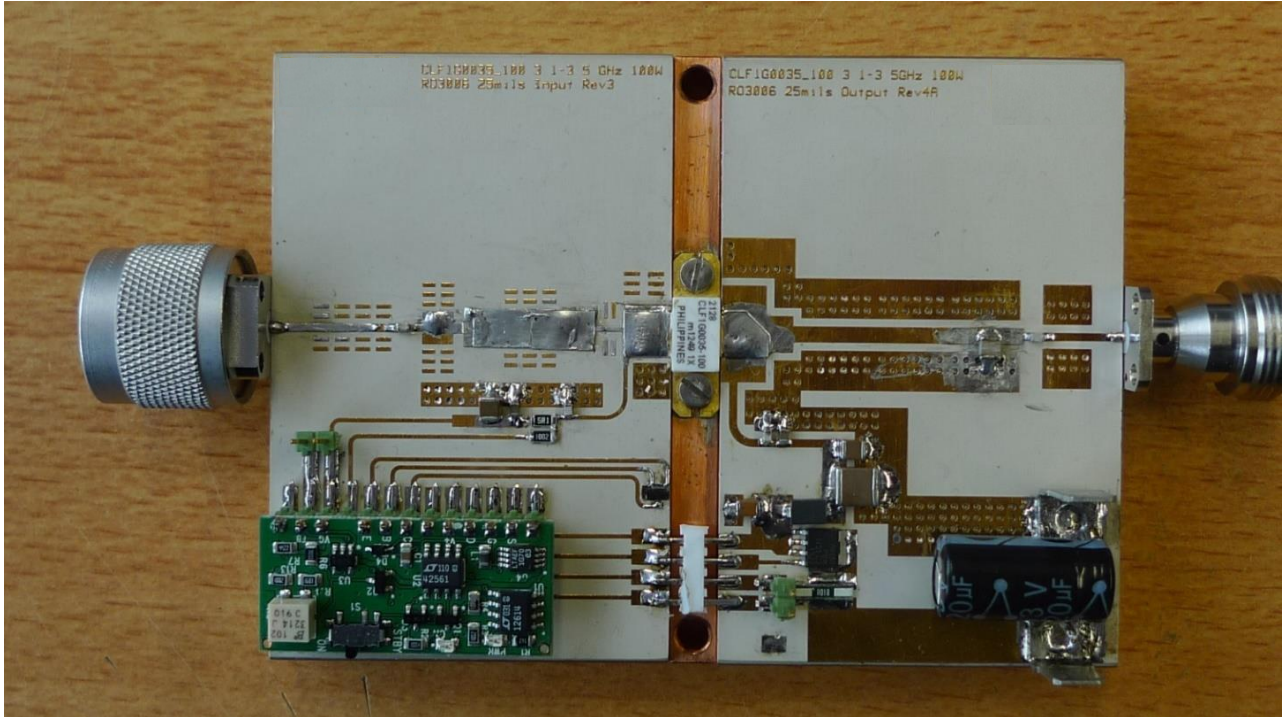
3.1 PCB Layout Drawing



3.2 Component list

Components list circuit.			
C1,C4,C6,C7	20pF	ATC800A	
C2,C9	4.7uF	Murata, 50V	
C10	10uF	Murata, 50V	
C3,C8	1nF	ATC700A	
C11	20nF	ATC	
C12	220uF	Electrolytic Capacitor	63V
L1		Ferrite Bead	Fair-Rite 2743019447
R1	5.1 Ω	SMD Resistor 1206	
R2	10k Ω	SMD Resistor 1206	
R3	0.01 Ω	Resistor 3008, 2W	Susumu RL7520WT-R010-F
Q1	100W	Transistor Ampleon	Ampleon CLF1G0035_100
Q2	PNP 45V 100mA GP	Transistor NXP	NXP BC857B
Q3	N-ch MOS 80V 80A	Transistor NXP	NXP BSMN8R2-80YS
A1	As described in AN11130	Ampleon	GaN Bias Module Rev B
S1	Tuning strip		
PCB Material: Rogers RO3006, Thickness 0,64mm, εr = 6.15, Cu=2x35 micron			

3.3 Photo's Demo Board



4. Attachments

Please see the attachment for the support files.

5. Legal information

5.1 Definitions

Draft — The document is a draft version only. The content is still under internal review and subject to formal approval, which may result in modifications or additions. Ampleon does not give any representations or warranties as to the accuracy or completeness of information included herein and shall have no liability for the consequences of use of such information.

5.2 Disclaimers

Limited warranty and liability — Information in this document is believed to be accurate and reliable. However, Ampleon does not give any representations or warranties, expressed or implied, as to the accuracy or completeness of such information and shall have no liability for the consequences of use of such information. Ampleon takes no responsibility for the content in this document if provided by an information source outside of Ampleon.

In no event shall Ampleon be liable for any indirect, incidental, punitive, special or consequential damages (including - without limitation - lost profits, lost savings, business interruption, costs related to the removal or replacement of any products or rework charges) whether or not such damages are based on tort (including negligence), warranty, breach of contract or any other legal theory.

Notwithstanding any damages that customer might incur for any reason whatsoever, Ampleon's aggregate and cumulative liability towards customer for the products described herein shall be limited in accordance with the Terms and conditions of commercial sale of Ampleon.

Right to make changes — Ampleon reserves the right to make changes to information published in this document, including without limitation specifications and product descriptions, at any time and without notice. This document supersedes and replaces all information supplied prior to the publication hereof.

Suitability for use — Ampleon products are not designed, authorized or warranted to be suitable for use in life support, life-critical or safety-critical systems or equipment, nor in applications where failure or malfunction of an Ampleon product can reasonably be expected to result in personal injury, death or severe property or environmental damage. Ampleon and its suppliers accepts no liability for inclusion and/or use of Ampleon products in

such equipment or applications and therefore such inclusion and/or use is at the customer's own risk.

Applications — Applications that are described herein for any of these products are for illustrative purposes only. Ampleon makes no representation or warranty that such applications will be suitable for the specified use without further testing or modification.

Customers are responsible for the design and operation of their applications and products using Ampleon products, and Ampleon accepts no liability for any assistance with applications or customer product design. It is customer's sole responsibility to determine whether the Ampleon product is suitable and fit for the customer's applications and products planned, as well as for the planned application and use of customer's third party customer(s). Customers should provide appropriate design and operating safeguards to minimize the risks associated with their applications and products.

Ampleon does not accept any liability related to any default, damage, costs or problem which is based on any weakness or default in the customer's applications or products, or the application or use by customer's third party customer(s). Customer is responsible for doing all necessary testing for the customer's applications and products using Ampleon products in order to avoid a default of the applications and the products or of the application or use by customer's third party customer(s). Ampleon does not accept any liability in this respect.

Export control — This document as well as the item(s) described herein may be subject to export control regulations. Export might require a prior authorization from competent authorities.

5.3 Trademarks

Notice: All referenced brands, product names, service names and trademarks are the property of their respective owners.

Any reference or use of any 'NXP' trademark in this document or in or on the surface of Ampleon products does not result in any claim, liability or entitlement vis-à-vis the owner of this trademark. Ampleon is no longer part of the NXP group of companies and any reference to or use of the 'NXP' trademarks will be replaced by reference to or use of Ampleon's own trademarks.

5.4 Contact information

For more information, please visit: <http://www.ampleon.com>

For sales office addresses, please visit: <http://www.ampleon.com/sales>

6. Contents

1.	Introduction	3
1.1	General Description	3
1.2	Test object details	3
1.3	Used Test signals.....	3
1.4	Test circuit.....	3
2.	Measurement Results	4
2.1	CW-pulsed – Power Sweep	4
2.2	Frequency sweep at Pout=100W (50dBm)	4
3.	PCB Layout	5
3.1	PCB Layout Drawing.....	5
3.2	Component list	5
3.3	Photo's Demo Board.....	6
4.	Attachments.....	6
5.	Legal information	7
5.1	Definitions	7
5.2	Disclaimers.....	7
5.3	Trademarks	7
5.4	Contact information	7
6.	Contents.....	8

Please be aware that important notices concerning this document and the product(s) described herein, have been included in the section 'Legal information'.

© Ampleon B.V. 2015.

All rights reserved.

For more information, please visit: <http://www.ampleon.com>
For sales office addresses, please visit: <http://www.ampleon.com/sales>

Date of release: 05 October 2015

Document identifier: NA-1766