

AR221063

ART2K0FE, 2MHz

V1.0— December 5th 2022

AMPLEON

Application Report

Document information

Status Public

Author(s) Hans Kartman

Abstract Measurement results of a Class E Amplifier design for 2MHz with the Art2K0FE transistor

Revision History

Table 1: Report revisions

Revision	Date	Description	Author
1.0	20221205	Initial document	Hans Kartman

Contents

- 1. **Revision History** 2
- 2. **Contents** 2
- 3. **List of figures** 2
- 4. **List of tables** 2
- 5. **General description** 3
- 6. **Biasing** 3
- 7. **Performance Indication** 4
- 8. **Performance Details** 4
- 8.1 Power, Gain and Efficiency 4
- 8.2 Layout and Components 5
- 9. **Hardware** 8
- 9.1 Board Image 8
- 10. **Legal information** 10
- 10.1 Definitions 10
- 10.2 Disclaimers 10
- 10.3 Trademarks 10
- 10.4 Contact information 10

List of figures

- Figure 1 DemoFront view 3
- Figure 2 Full CW Gain and Efficiency vs Load power 4
- Figure 3 Output board 5
- Figure 4 Input board
- Figure 5 Image of demoboard 8

List of tables

- Table 1:Report revisions 2
- Table 2:Performance indication,at 2MHz 4

General description

This report presents the measurement results of a Class E Amplifier demo AR. The device used is ART2k0, 9th generation LDMOS in a SOT539 push-pull package. The presented demo is tuned for 2MHz operation.

The demo circuit is built on two PCB boards, assembled on a full copper baseplate with integrated water-cooling channel.

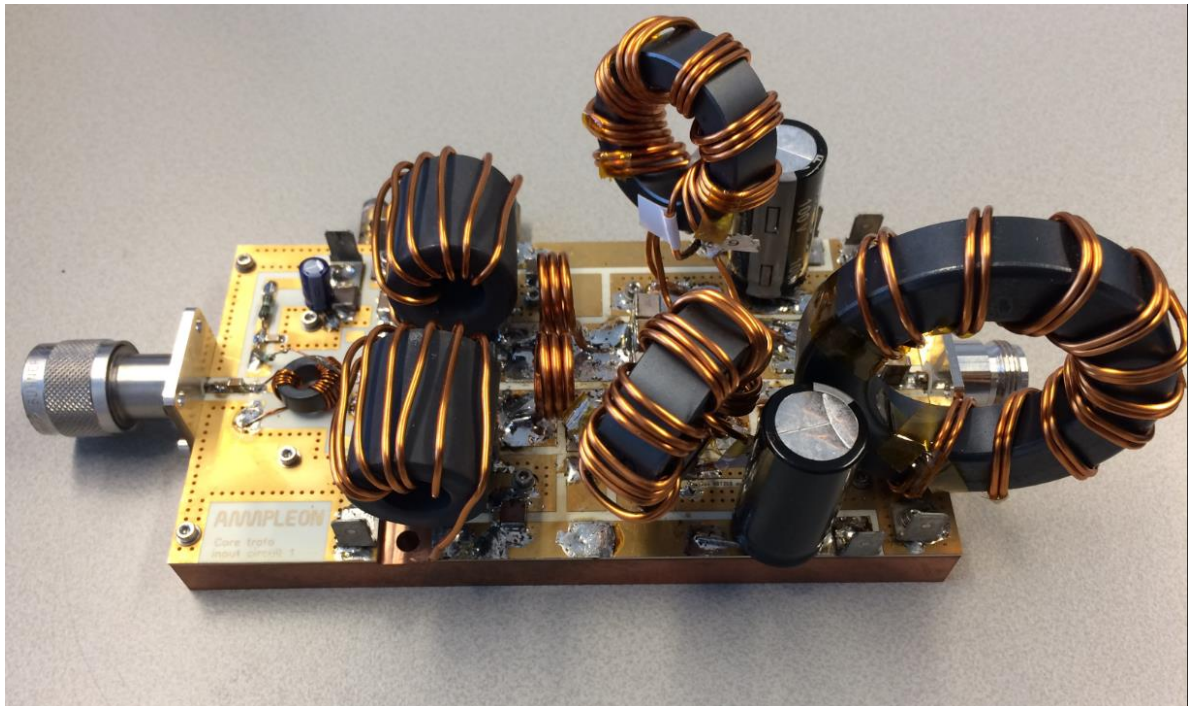


Figure 1 Demo Front view

Biasing

The biasing settings are as follows:

$$\begin{aligned}
 V_{DD} &= 56V \\
 V_{GS} &= \text{approx } 1.8V, \text{ adjusted to } I_{DQ} = 200\text{mA total current}
 \end{aligned}$$

After connecting the water cooling and source and load, first gate bias voltage is set to zero volts, then the drain voltage is connected. Second the gate bias supply is slowly increased. Slowly the gate bias voltage can be increased to about 1.8Volts, until the desired I_{DQ} is reached.

Performance Indication

Table 2: Performance indication, at 2MHz

Parameter	Condition	Unit	CW
V _{DD}		V	56
S11 at input connector		dB	>10
P _{5dB} ¹	G _{MAX} -6dB	/ W	1300W
Gain	@P _{6dB}	dB	22
Drain Efficiency	@P _o	%	82

Performance Details

Power, Gain and Efficiency



figure 2 Full CW Gain and Efficiency vs Load power

Layouts and Components.

Output circuit

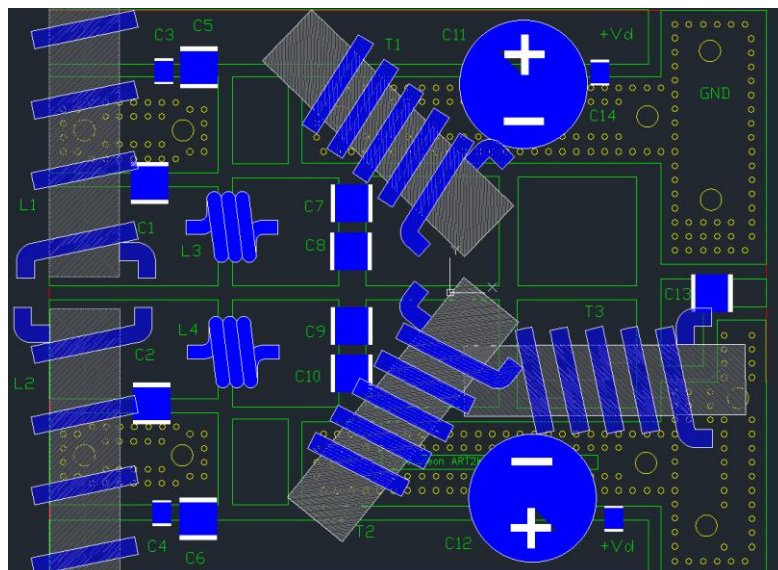


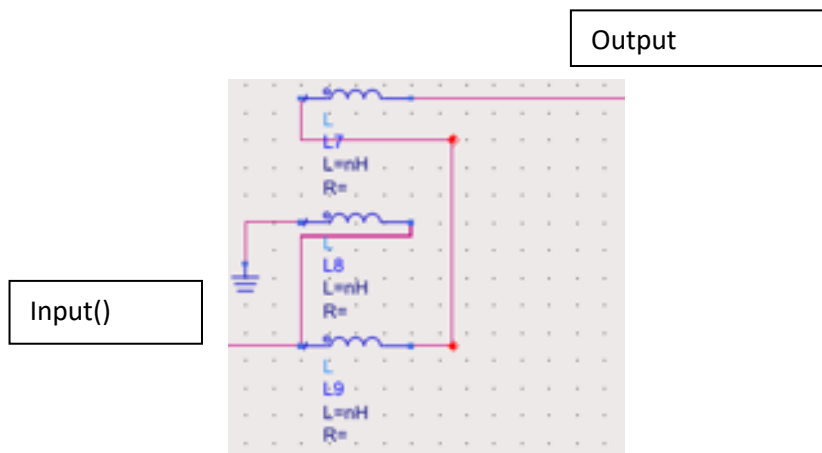
Figure 3 Output board

List of components Output board.

Component	Value	Manufacturer	Remarks
L1, L2	6.5 turns 1.6mm wire on T61 28.6x25.8x12.8 core	Fair-rite 2661102002	tube core
L3, L4	3 Turns 1.8mm enamel wire Aircoil Diameter 15mm	Handwound	Close turns
T1, T2	7 turns 1.6mm wire trifilar wound on FT-140-43	Fair-rite	Connected as 1:9 transformer See fig
T3	9Turns bifilar wound 1.6mm wire on T43 61x35x12.7	Fair-rite	1:1 Balun connected See fig
C1, C2, C13	10nF 2225	Knowles Cypher	
C3, C4, C14, C15	100nF 100V	TDK	
C5, C6	10uF 100V	TDK	
C7, C8/C9,C10	9x10nF 2225 per side	Knowles Cypher	Tb replaced by 3x27n
C11, C12	1000uF, 100V		electrolytic
Board	RF35	Taconic	Er=3.5, T=0.76mm

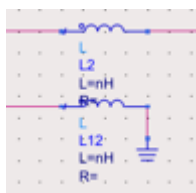
Construction of the transformers.

Output transformers.



T2 and T3 are constructed by making 7 turns 1.6mm wire trifilar wound on a FT-140-43 toroide core. Each transformer has it own core connections of the wires as shown in the circuit diagram above. The turn are evenly distributed around the toroide core. The dots on the left side of the windings indicate the winding orientation.

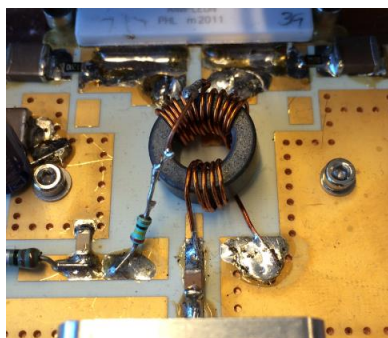
Output balun construction.



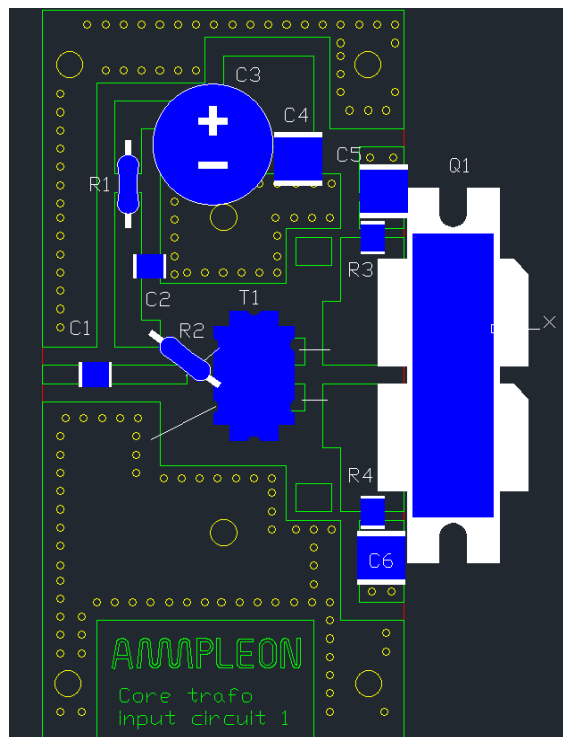
The output balun is constructed by 9 turns bifilar wound on a T43 61x35x12.7mm toroide core. The turns are evenly distributed around the core.

Input balun transformer construction.

Photograph of the input balun/transformer



Input circuit.



Input board.

List of components input board.

Component	Value	Manufacturer	Remarks
R1	1k Ohms		wired
R2	27 Ohms		wired
R3, R4	12 Ohms		0805
T1	Transformer	Amidon/ Fair-rite FT50-43 material	Primary:5T Secondary: 2x5T 0.5mm enamel wire
C1	20nF	TDK	TDK
C2	100nF	TDK	
C3	47uF		Electrolytic 63V
C4	4.7uF	TDK	
C5, C6	10uF	TDK	
Q1	ART2k0	Ampleon	RF Power LdMosfet

Hardware

Board Image, Top view, prototype demo.

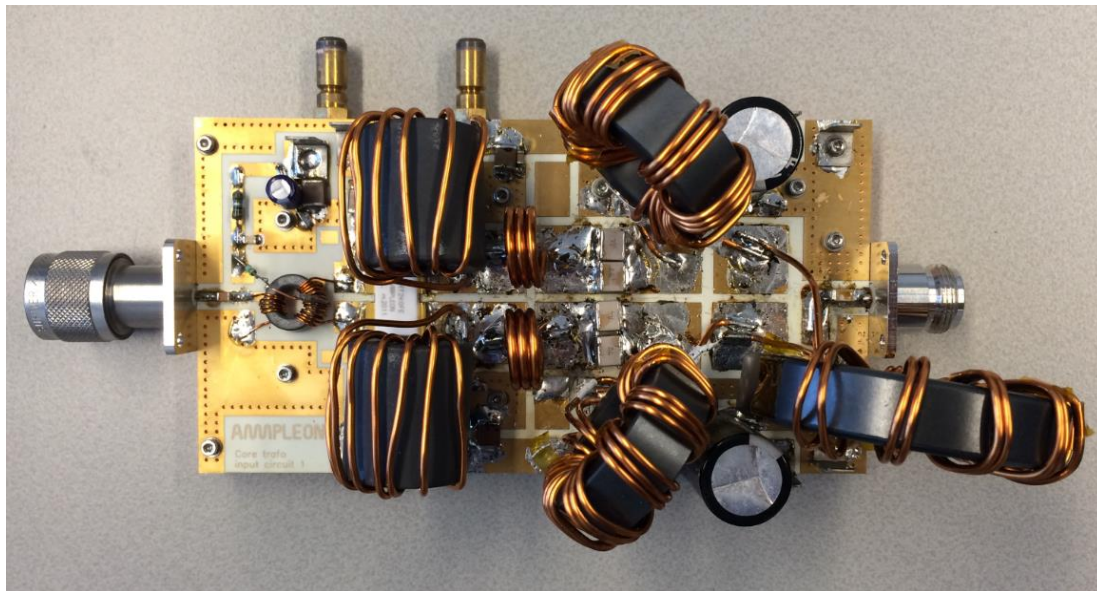


Figure 3 Image of demoboard

Thermal Considerations.

The amplifier is capable of generating 1300 Watts of full CW RF power at efficiencies above 80 %.

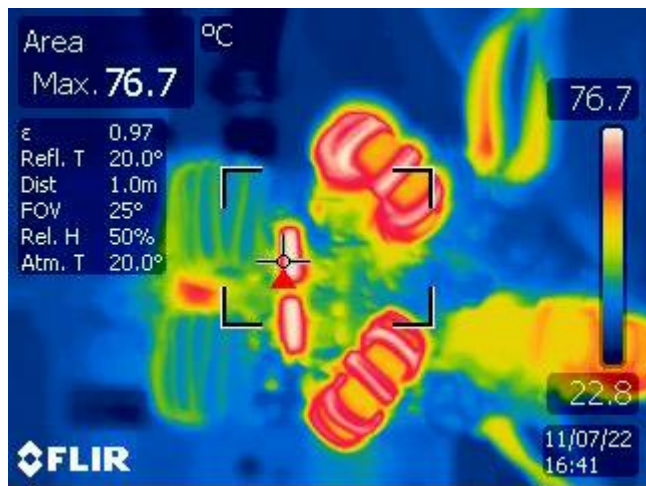
Dissipated power at this output power level is around 300Watts.

In this version of the demo amplifier the transistor is bolted down to the copper baseplate using thermal paste.

Below a thermal image is shown of the amplifier output board while the amplifier is running at 1300Watts output power.

It shows left to right: Transistor and drain feed coils, matching network, Transformers, balun.

The image shows the components with the highest temperature are the series coils L3 and L4 of the class E network at 77 degrees Celsius.



Legal information

Definitions

Draft — The document is a draft version only. The content is still under internal review and subject to formal approval, which may result in modifications or additions. Ampleon does not give any representations or warranties as to the accuracy or completeness of information included herein and shall have no liability for the consequences of use of such information.

Disclaimers

Limited warranty and liability — Information in this document is believed to be accurate and reliable. However, Ampleon does not give any representations or warranties, expressed or implied, as to the accuracy or completeness of such information and shall have no liability for the consequences of use of such information. Ampleon takes no responsibility for the content in this document if provided by an information source outside of Ampleon.

In no event shall Ampleon be liable for any indirect, incidental, punitive, special or consequential damages (including - without limitation - lost profits, lost savings, business interruption, costs related to the removal or replacement of any products or rework charges) whether or not such damages are based on tort (including negligence), warranty, breach of contract or any other legal theory.

Notwithstanding any damages that customer might incur for any reason whatsoever, Ampleon's aggregate and cumulative liability towards customer for the products described herein shall be limited in accordance with the Terms and conditions of commercial sale of Ampleon.

Right to make changes — Ampleon reserves the right to make changes to information published in this document, including without limitation specifications and product descriptions, at any time and without notice. This document supersedes and replaces all information supplied prior to the publication hereof.

Suitability for use — Ampleon products are not designed, authorized or warranted to be suitable for use in life support, life-critical or safety-critical systems or equipment, nor in applications where failure or malfunction of an Ampleon product can reasonably be expected to result in personal injury, death or severe property or environmental damage. Ampleon and its suppliers accepts no liability for inclusion and/or use of Ampleon products in such equipment or applications and therefore such inclusion and/or use is at the customer's own risk.

Contact information

For more information, please visit: <http://www.ampleon.com>

For sales office addresses, please visit: <http://www.ampleon.com/sales>

Applications — Applications that are described herein for any of these products are for illustrative purposes only. Ampleon makes no representation or warranty that such applications will be suitable for the specified use without further testing or modification.

Customers are responsible for the design and operation of their applications and products using Ampleon products, and Ampleon accepts no liability for any assistance with applications or customer product design. It is customer's sole responsibility to determine whether the Ampleon product is suitable and fit for the customer's applications and products planned, as well as for the planned application and use of customer's third party customer(s). Customers should provide appropriate design and operating safeguards to minimize the risks associated with their applications and products.

Ampleon does not accept any liability related to any default, damage, costs or problem which is based on any weakness or default in the customer's applications or products, or the application or use by customer's third party customer(s). Customer is responsible for doing all necessary testing for the customer's applications and products using Ampleon products in order to avoid a default of the applications and the products or of the application or use by customer's third party customer(s). Ampleon does not accept any liability in this respect.

Export control — This document as well as the item(s) described herein may be subject to export control regulations. Export might require a prior authorization from competent authorities.

Trademarks

Notice: All referenced brands, product names, service names and trademarks are the property of their respective owners.

Any reference or use of any 'NXP' trademark in this document or in or on the surface of Ampleon products does not result in any claim, liability or entitlement vis-à-vis the owner of this trademark. Ampleon is no longer part of the NXP group of companies and any reference to or use of the 'NXP' trademarks will be replaced by reference to or use of Ampleon's own trademarks.