

# AR212091

ARF2K0FE, 270-300MHz

V1.0 — 22 April 2022

AMPLEON

Application Report

## Document information

Info	Content
Status	General Publication
Author(s)	Bill Goumas
Abstract	Measurement results of an ART2K0FE device in board #AR212091 tested over 270-310MHz at 62V

## 1 Revision History

Table 1. Report revisions

Revision No.	Date	Description	Author
1.0	20210818	Initial document	Bill Goumas
2.0	20220422	Changed to General Publication	Bill Goumas

## 2 Contents

- 1 Revision History** ..... 2
- 2 Contents** ..... 2
- 3 List of Figures** ..... 3
- 4 List of Tables** ..... 3
- 5 General Description** ..... 4
- 6 Biasing** ..... 5
  - 6.1 Bias Details ..... 5
- 7 Test Bench Set Up** ..... 5
- 8 Summary** ..... 6
- 9 Performance Details** ..... 7
  - 9.1 Small Signal Results ..... 7
  - 9.2 Gain, Efficiency vs Power out ..... 8
  - 9.3 Performance vs Voltage and Bias ..... 9
  - 9.4 P1,P2dB vs Frequency ..... 10
  - 9.5 Gain, Efficiency at Power Out=1500W ..... 11
  - 9.6 Gain vs Power Output, Sweep Pulse Width, ..... 12
- 10 IR Scan Results** ..... 13
  - 10.1 IR Scan, Power Out=1500W ..... 13
- 11 Spectrum** ..... 14
  - 11.1 Initial Results ..... 14
  - 11.2 Spectrum Results after Modifications ..... 15
- 12 Hardware** ..... 16
  - 12.1 Board photograph ..... 16
  - 12.2 PCB layout ..... 17
  - 12.3 Bill of materials ..... 18
  - 12.4 PCB materials ..... 19
  - 12.5 Device markings ..... 19
- 13 Legal Information** ..... 20
  - 13.1 Contact information ..... 20

## 3 List of Figures

Figure 1. Test Bench Equipment set up .....	5
Figure 2. Small Signal Data, Vdd=60V, Sweep Idq, Pin=10dBm .....	7
Figure 3. Small Signal Data, Sweep Vdd, Idq=600mA, Pin=10dBm .....	7
Figure 4. Gain, Efficiency vs Power out(dBm), Duty=10%.....	8
Figure 5. Gain, Efficiency vs Power out(W), Duty=10% .....	8
Figure 6. P1, P2dB(dBm) vs Freq, Sweep Voltage .....	9
Figure 7. Gain, Eff vs Pout, Sweep Idq .....	9
Figure 8. P1 and P2dB vs Frequency.....	10
Figure 9. Gain(dB), Eff(%) at Power Out=1500W vs Frequency .....	11
Figure 10. Pulse Gain vs Power Out , Duty=10%, .....	12
Figure 11. IR Scan at Pout=1500W, Duty=10%.....	13
Figure 12. Spectrum Analyze Results, Max Hold.....	14
Figure 13. Spectrum Analyze Results, Max Hold.....	15
Figure 14. Board Photograph .....	16
Figure 15. PCB Layout Board #AR212091 .....	17

## 4 List of Tables

Table 1. Report revisions.....	2
Table 2. RF Performance .....	6
Table 3. BOM .....	18
Table 4. Board Specifications .....	19
Table 5. Device Specifications.....	19

## 5 General Description

---

This report presents the measurement results of the Class AB Demo board AR192069. The circuit was swept over 270-310MHz and 59-62V. Current bench set-up is limited to 62V.

Idq was set for 600mA for most of the testing.

## 6 Biasing

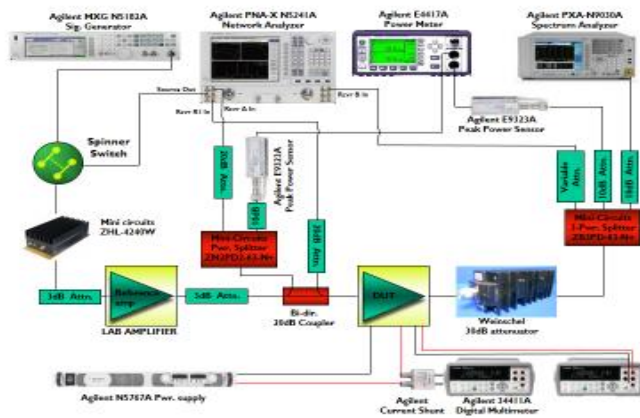
### 6.1 Bias Details

$I_{dq}$  is adjusted via the pot on the bias board. Apply +5V to the red wire. Pot is set for  $\sim 600\text{mA}$  at 5V.

For  $V_{dd} = 62\text{V}$ ,  $V_{GS} = \sim 2.2\text{V}$  per device leading to an  $I_{dq} = 600\text{mA}$ .

## 7 Test Bench Set Up

Figure 1. Test Bench Equipment set up



## 8 Summary

This report presents the measurement results of the Class AB Demo board AR212091. The circuit was swept over 270-310MHz. Initial result had a small signal gain peak in the 110-135MHz frequency range. Result of the gain peak is shown in the spectrum in section 11. The blocking caps were changed which knocked the peak down by ~20dB. Results after the change are also shown in Section 11.

**Table 2. RF Performance**

Parameter	Measurement	Unit
Specified frequency range	280-300	MHz
Drain voltage	62	V
Quiescent drain current	600	mA
P1dB at 10% Duty Cycle and 62V	1400	W
*P1dB at 10% Duty Cycle and 65V	1500	W
Efficiency at Power Out=P1dB at 62V	55-65	%
Gain at P1dB and 62V	≥ 22	dB

\*Section 9.3 shows data at 59 and 62V. This can be used to project the P1dB at 65V. Bench testing is currently limited to 62V due to Power Supply limitations.

For Stability Analysis, Small Signal K-Factor is measured over a wide range of the IV Bias Plane. This data is shown in section 9.1. K-factor has considerable margin. This methodology has been shown to yield a stable amplifier under large signal conditions including VSWR.

Coax Balun-If the coax baluns used in this circuit are copied and used for a production design, the output coax can be a smaller diameter. The bigger coax was for a CW application.

## 9 Performance Details

### 9.1 Small Signal Results

Vdd=60V, Sweep Idq: Red=300mA , Blue=600mA, Purple=1.2A

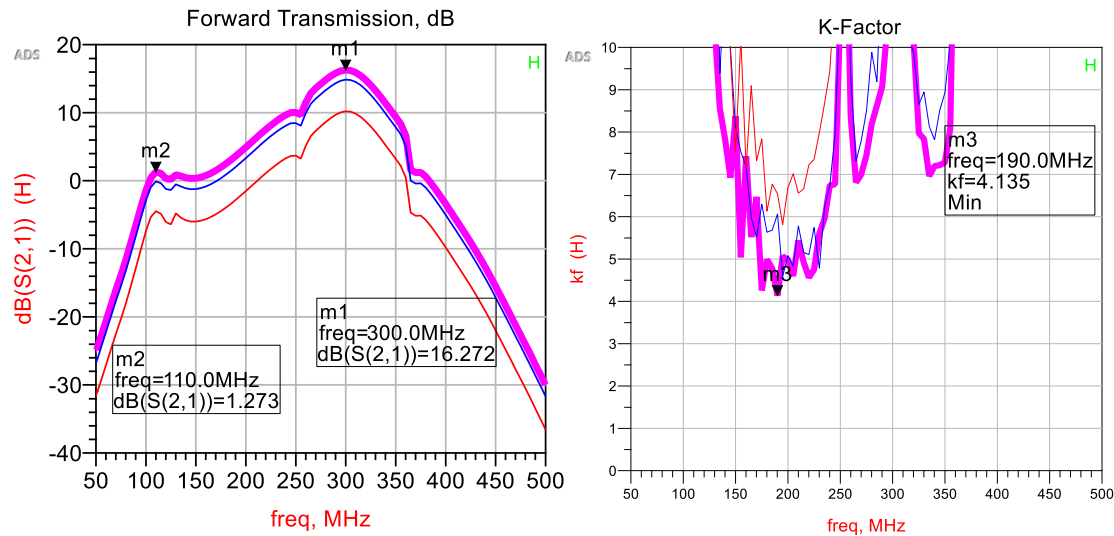


Figure 2. Small Signal Data, Vdd=60V, Sweep Idq, Pin=10dBm

Idq=600mA, Sweep Vdd: Red=15V , Blue=30V, Purple=60V

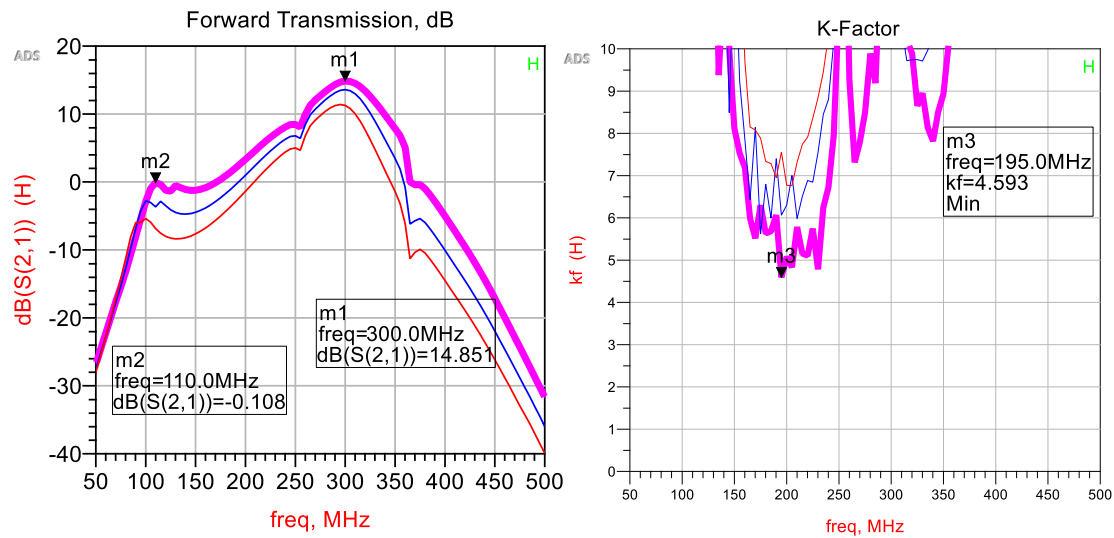


Figure 3. Small Signal Data, Sweep Vdd, Idq=600mA, Pin=10dBm

## 9.2 Gain, Efficiency vs Power out

Vdd=62V, Idq=600mA, Power in dBm

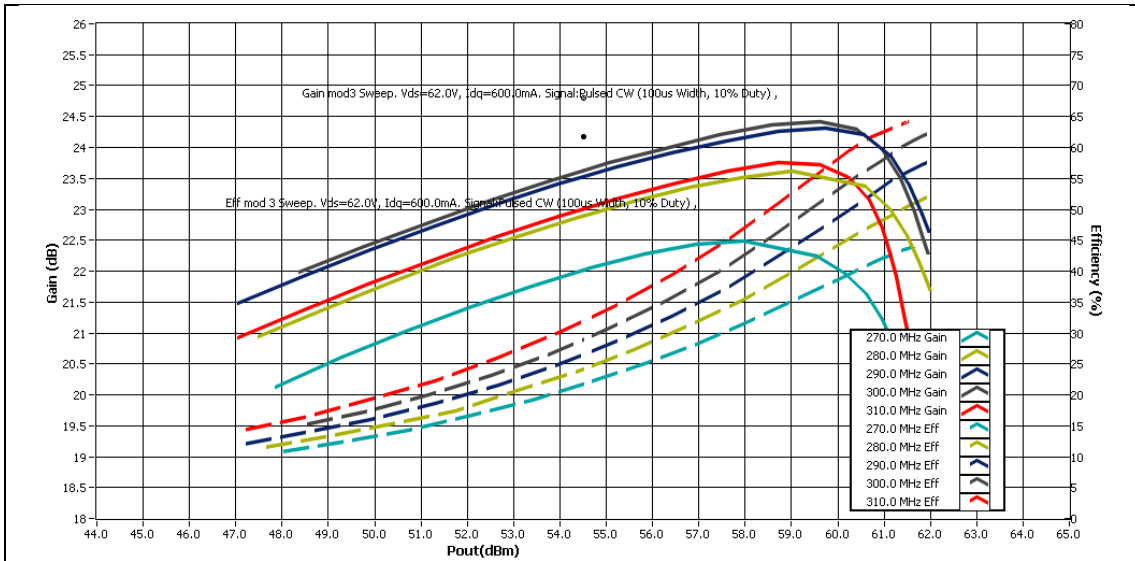


Figure 4. Gain, Efficiency vs Power out(dBm), Duty=10%

Vdd=62V, Idq=600mA, Power in Watts

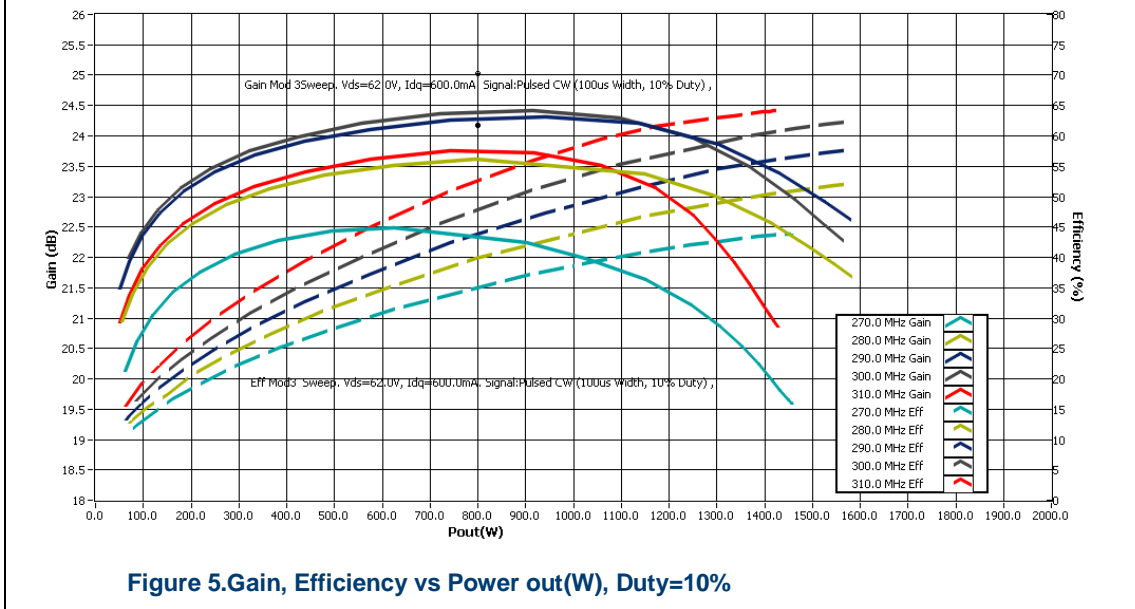


Figure 5. Gain, Efficiency vs Power out(W), Duty=10%



## 9.3 Performance vs Voltage and Bias

Vdd varied, Idq=600mA, Vdd=59 (red, purple),62(blue, black) 10% duty,100usec PW

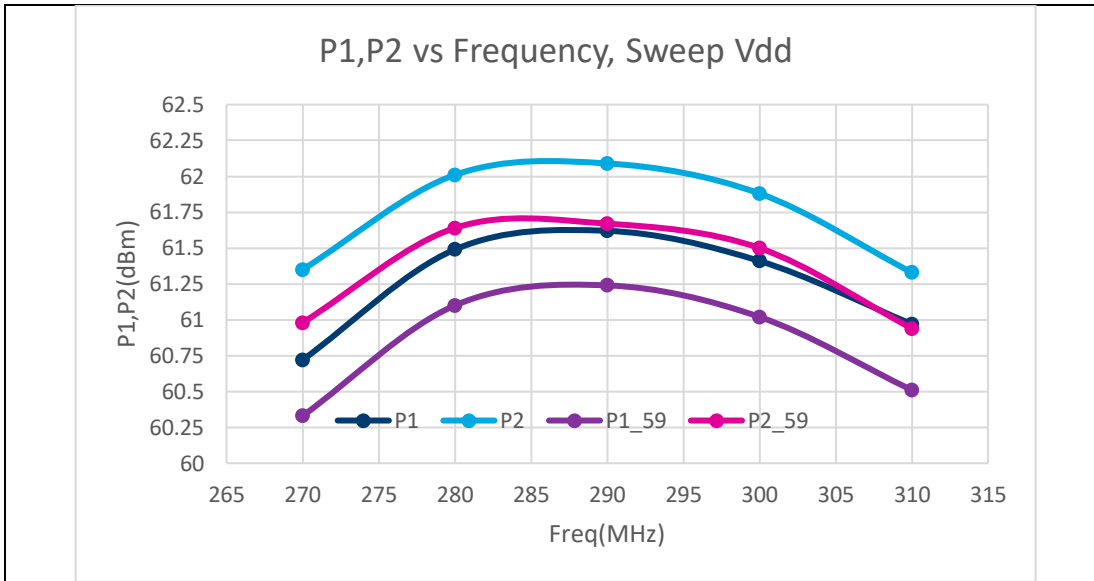


Figure 6. P1,P2dB(dBm) vs Freq, Sweep Voltage

Vdd=62V, Sweep Idq= 600(blue),900(green) and 1200mA(red)

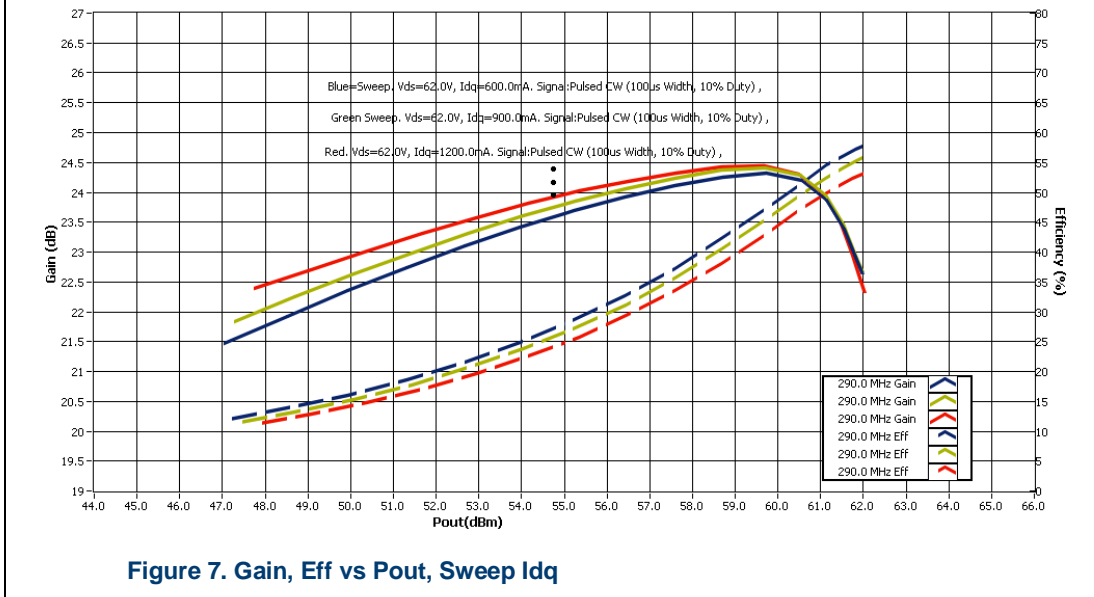


Figure 7. Gain, Eff vs Pout, Sweep Idq

9.4 P1,P2dB vs Frequency

Vdd=62V, Idq=600mA, 10% duty

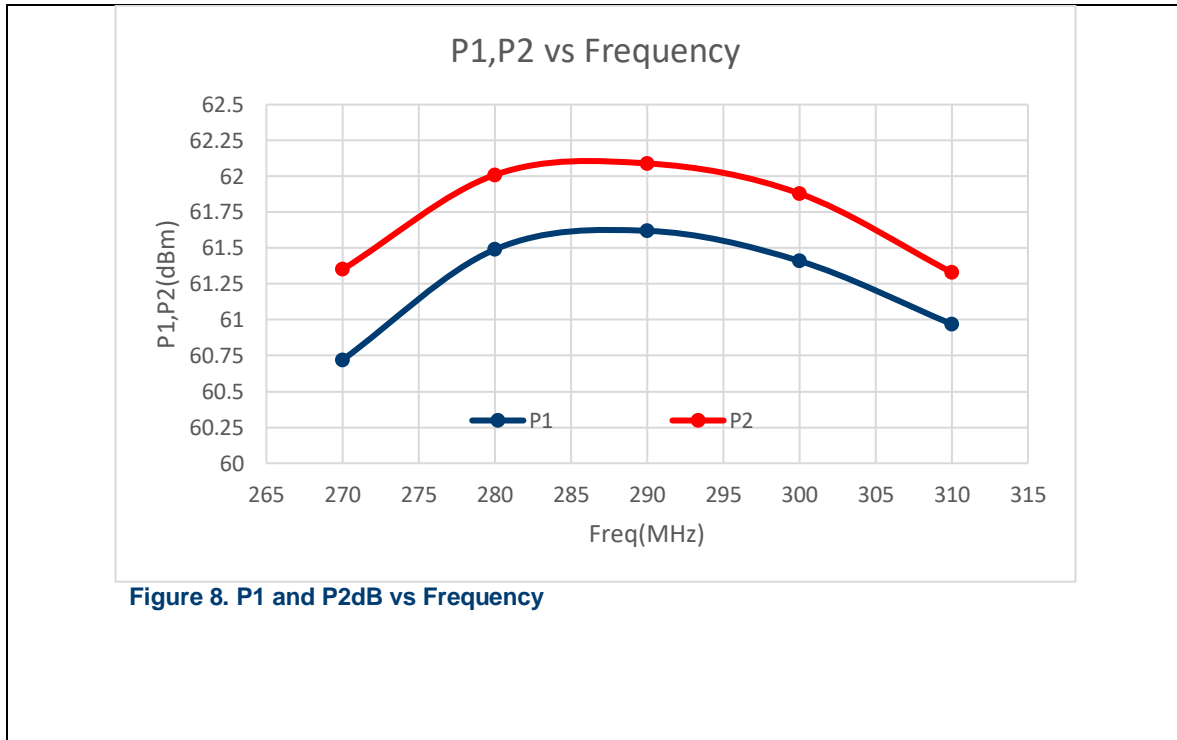
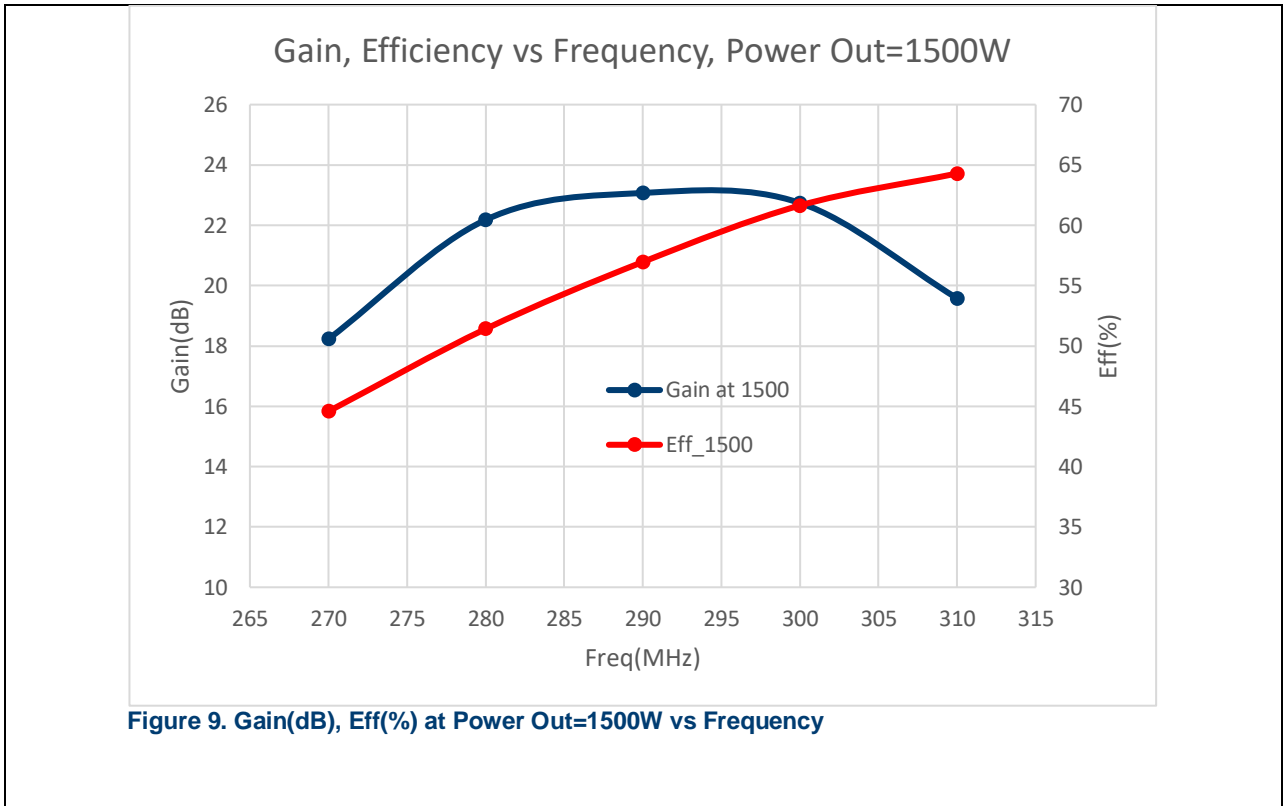


Figure 8. P1 and P2dB vs Frequency

### 9.5 Gain, Efficiency at Power Out=1500W

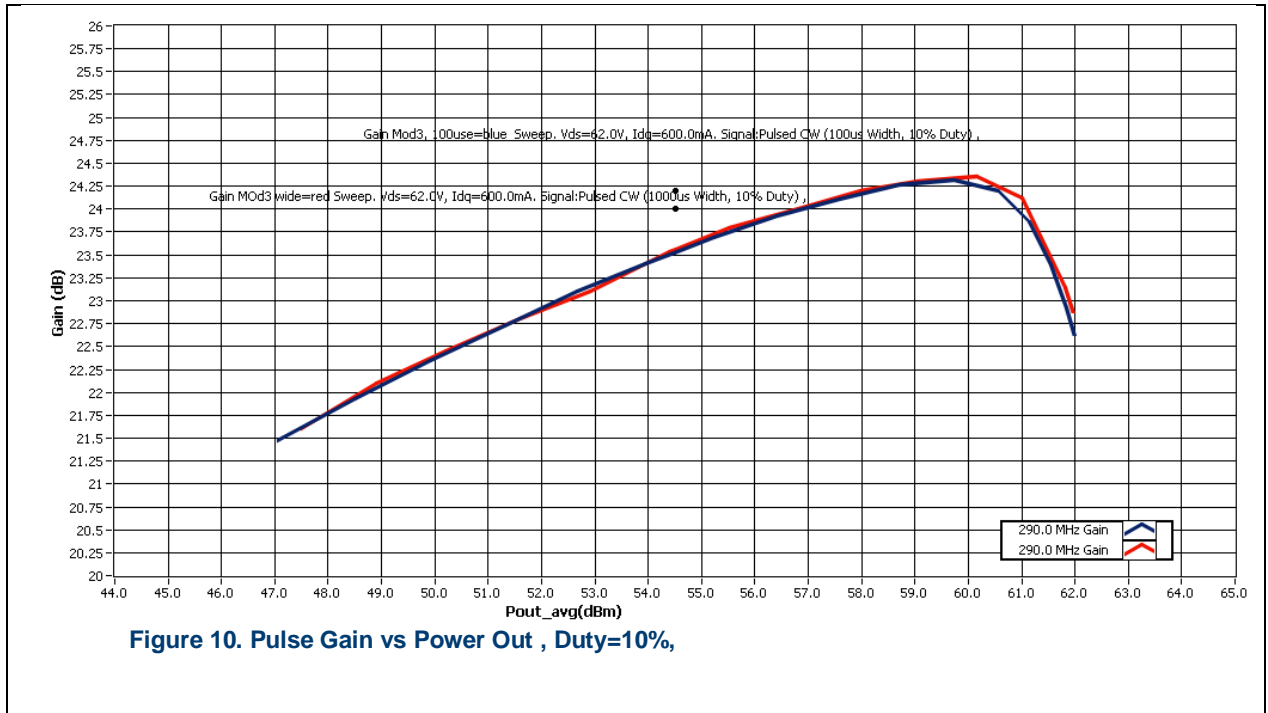
Vdd=62V, Idq=10%, Duty=10%, 100usec PW



## 9.6 Gain vs Power Output, Sweep Pulse Width,

Vdd=62V, Idq=600mA, 10% Duty

Black=100usec, red=1msec



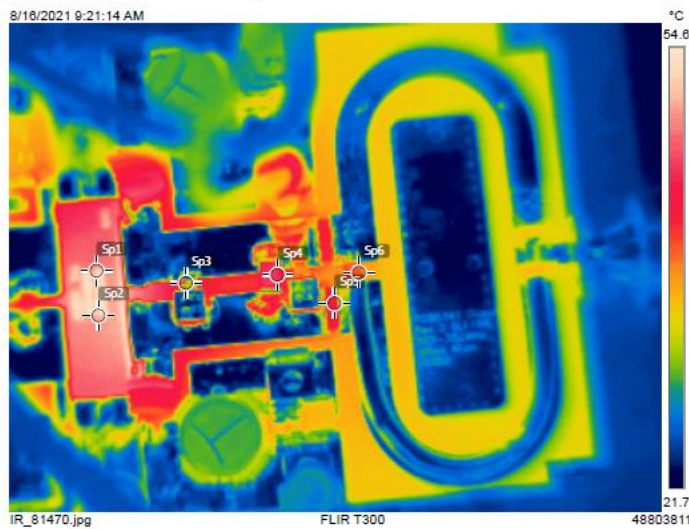
## 10 IR Scan Results

### 10.1 IR Scan, Power Out=1500W

Vdd=62V, Idq=600mA, Pout=1500W, Duty=10%, Pulse Width=10msec



Board 212091. Freq=300MHz, 10% duty, Pout=1500W, Vdd=62V, Iavg=4.65A



Measurements

Sp1	52.5 °C
Sp2	52.2 °C
Sp3	40.2 °C
Sp4	48.0 °C
Sp5	43.0 °C
Sp6	40.6 °C

Parameters

Emissivity	0.95
Ref. temp.	20 °C

Figure 11. IR Scan at Pout=1500W, Duty=10%

## 11 Spectrum

### 11.1 Initial Results

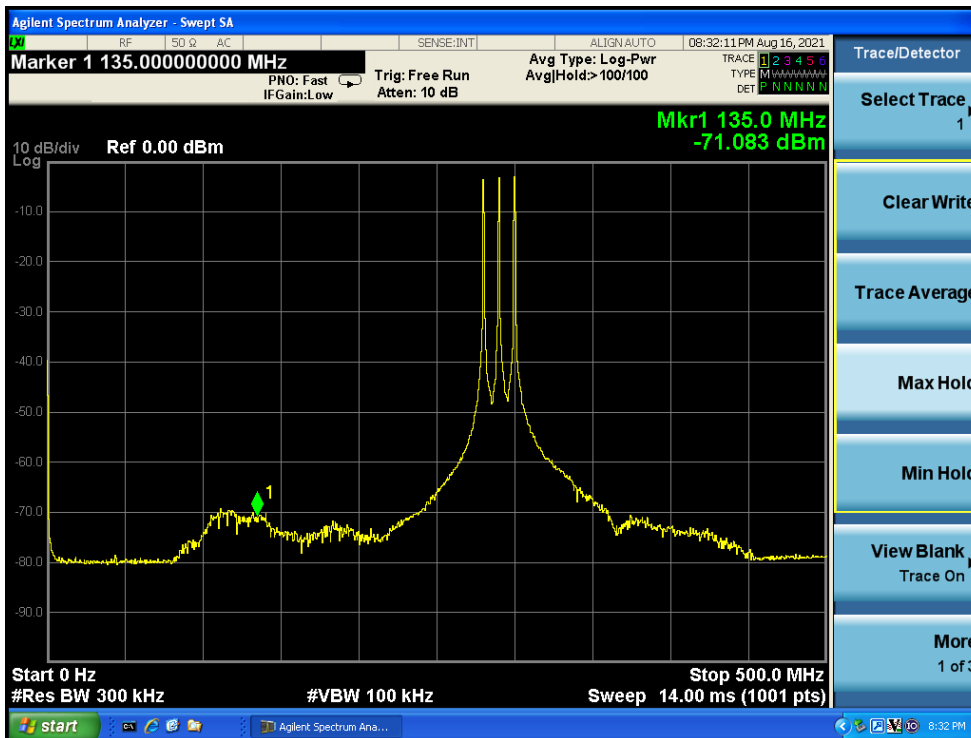


Figure 12. Spectrum Analyze Results, Max Hold

Note: Noise bumps near ~110-140MHz

## 11.2 Spectrum Results after Modifications

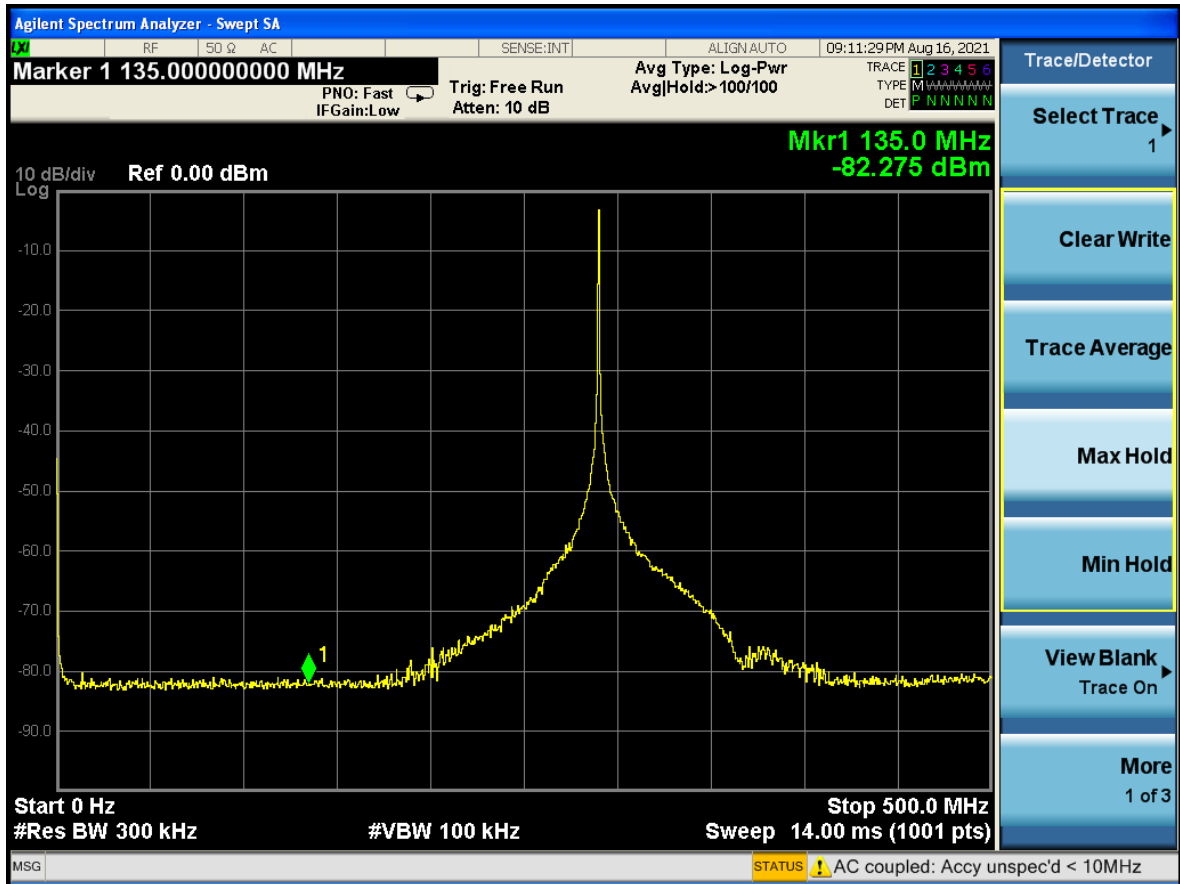


Figure 13. Spectrum Analyze Results, Max Hold

## 12 Hardware

### 12.1 Board photograph

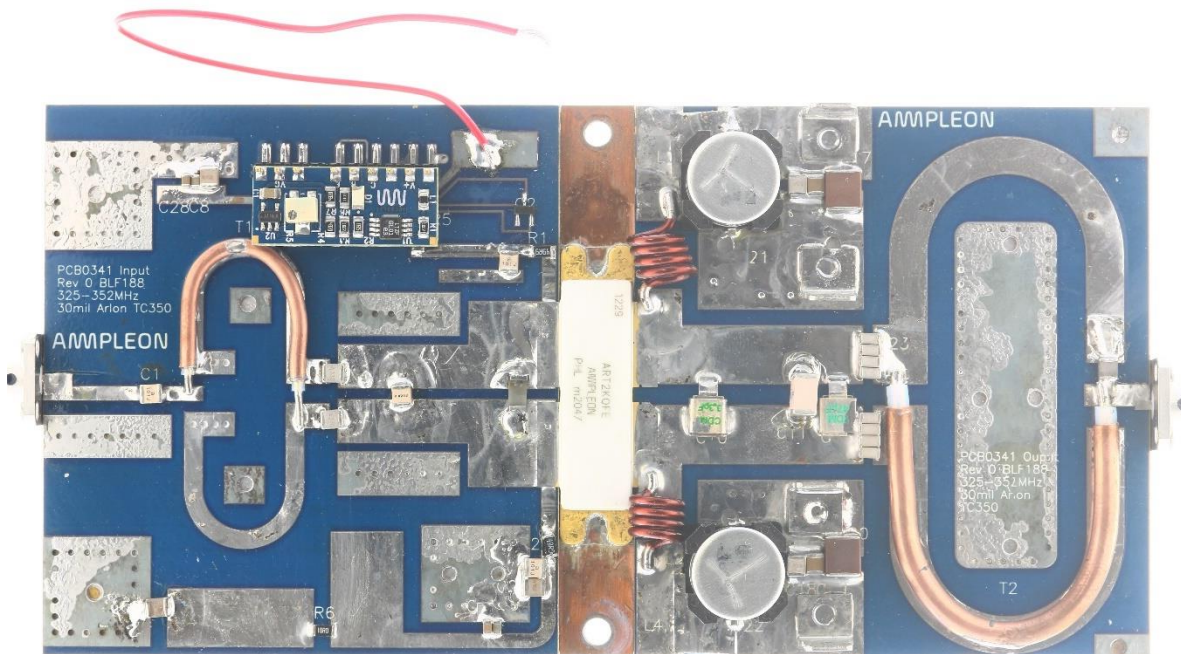


Figure 14. Board Photograph



## 12.2 PCB layout

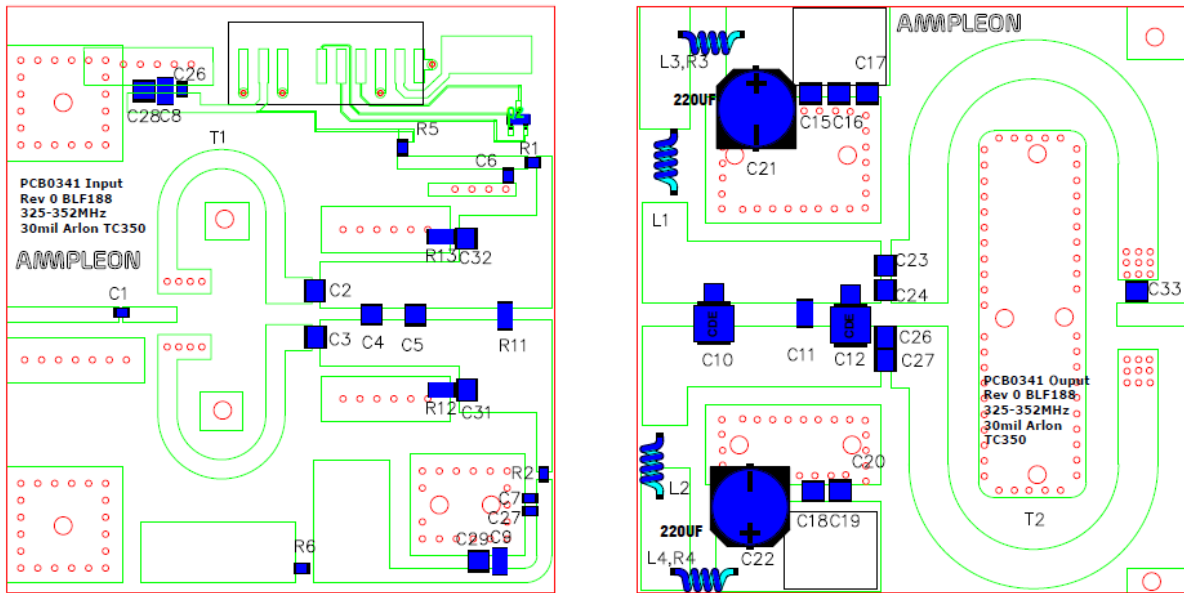


Figure 15.PCB Layout Board #AR212091

## 12.3 Bill of materials

Table 3. BOM

Designator	Description	Manufacturer	Part#
PCB Input	30 mil Arlon TC350	Avanti Circuits	PCB0341 Input rev0
PCBOutput	30 mil Arlon TC350	Avanti Circuits	PCB0341 Output rev0
<u>U1</u>	LDMOS bias module	Ampleon	CA-330-11
Q1	RF Transistor	Ampleon	ART2K0FE
Q2	2N2222 NPN Transistor	Fairchild	MMBT2222
R1, R2	Resistor, 51 ohm	Generic	0805
R3, R4	Short Out with Copper Strip	Generic	
R5, R6	Resistor, 10ohm	Generic	0805
R11	Resistor, 50 OHM	IMS	
L1, L2,	4turn ID=5mm 14 or 16G wire		
C1, C6, C7, C15, C18	Capacitor 100pF	ATC	100B
C2, C3	Capacitor 33pF	ATC	100B
C4	Capacitor 82pF	ATC	100B
C5	DNP	ATC	100B
C10	Capacitor 3.3pF Mica	CDE	MIN02-002
C11	Capacitor 3.9pF	Passive Plus	2225
C12	Capacitor 47pF Mica	CDE	MIN02-002
C23,C24,C26,C27	2x Capacitor – mounted on side 150pF	ATC	800B
C26,C27input	Capacitor 1000pF	ATC	600F
C17, C20	10uF 2220 100V	TDK	C5750X7S2A106K230KE
C16, C19	0.1uF 1210	Murata	GRM32ER72A105KA01
C21,C22	150uF Electrolytic 80V	Panasonic	EEEFK1K151AQ
C8, C9,	Capacitor, 50V 10% X7R, 0805	Generic	0805
C28,C29	Capacitor, 50V 10% X7R, 100nF	Generic	0805
C31,C32	DNP	Generic	
C33	Capacitor 4.7pF	ATC	100B
T1	Semirigid coax 15 ohm 2.2mm	Micro-Coax	15 ohm
T2	Semirigid coax 25 ohm 3.3mm diameter	Micro-Coax	25 ohm

## 12.4 PCB materials

Table 4. Board Specifications

Parameter	Value
Manufacturer	Arlon
Type	TC350
Thickness	30 mils, 1oz. copper
Layers	2, top/bottom. Bottom all copper

## 12.5 Device markings

Table 5. Device Specifications

Parameter	Value
Manufacturer	Ampleon
Device	ART2K0FE
Date Code	M1914

## 13 Legal Information

### Definitions

**Draft** — The document is a draft version only. The content is still under internal review and subject to formal approval, which may result in modifications or additions. Ampleon does not give any representations or warranties as to the accuracy or completeness of information included herein and shall have no liability for the consequences of use of such information.

### Disclaimers

**Limited warranty and liability** — Information in this document is believed to be accurate and reliable. However, Ampleon does not give any representations or warranties, expressed or implied, as to the accuracy or completeness of such information and shall have no liability for the consequences of use of such information. Ampleon takes no responsibility for the content in this document if provided by an information source outside of Ampleon.

In no event shall Ampleon be liable for any indirect, incidental, punitive, special or consequential damages (including - without limitation - lost profits, lost savings, business interruption, costs related to the removal or replacement of any products or rework charges) whether or not such damages are based on tort (including negligence), warranty, breach of contract or any other legal theory.

Notwithstanding any damages that customer might incur for any reason whatsoever, Ampleon' aggregate and cumulative liability towards customer for the products described herein shall be limited in accordance with the Terms and conditions of commercial sale of Ampleon.

**Right to make changes** — Ampleon reserves the right to make changes to information published in this document, including without limitation specifications and product descriptions, at any time and without notice. This document supersedes and replaces all information supplied prior to the publication hereof.

**Suitability for use** — Ampleon products are not designed, authorized or warranted to be suitable for use in life support, life-critical or safety-critical systems or equipment, nor in applications where failure or malfunction of an Ampleon product can reasonably be expected to result in personal injury, death or severe property or environmental damage. Ampleon and its suppliers accept no liability for inclusion and/or use of Ampleon products in such equipment or applications and therefore such inclusion and/or use is at the customer's own risk.

**Applications** — Applications that are described herein for any of these products are for illustrative purposes only. Ampleon makes no representation or warranty that such applications will be suitable for the specified use without further testing or modification.

Customers are responsible for the design and operation of their applications and products using Ampleon products, and Ampleon accepts no liability for any assistance with applications or customer product design. It is customer's sole responsibility to determine whether the Ampleon product is suitable and fit for the customer's applications and products planned, as well as for the planned application and use of customer's third party customer(s). Customers should provide appropriate design and operating safeguards to minimize the risks associated with their applications and products.

Ampleon does not accept any liability related to any default, damage, costs or problem which is based on any weakness or default in the customer's applications or products, or the application or use by customer's third party customer(s). Customer is responsible for doing all necessary testing for the customer's applications and products using Ampleon products in order to avoid a default of the applications and the products or of the application or use by customer's third party customer(s). Ampleon does not accept any liability in this respect.

**Export control** — This document as well as the item(s) described herein may be subject to export control regulations. Export might require a prior authorization from competent authorities.

### Trademarks

Notice: All referenced brands, product names, service names and trademarks are the property of their respective owners.

Any reference or use of any 'NXP' trademark in this document or in or on the surface of Ampleon products does not result in any claim, liability or entitlement vis-à-vis the owner of this trademark. Ampleon is no longer part of the NXP group of companies and any reference to or use of the 'NXP' trademarks will be replaced by reference to or use of Ampleon's own trademarks.

## 13.1 Contact information

For more information, please visit: <http://www.ampleon.com>

For sales office addresses, please visit: <http://www.ampleon.com/sales>